

CYBERTEC POSTGRESQL SUPPORT POLICIES

Document version: 1.2
Last change: 2025-03-19

TABLE OF CONTENTS

- SUPPORT PACKAGES..... 4**
 - ADVANCED SUPPORT SERVICES..... 4
 - SUPPORT RESPONSE TIMES..... 5
 - SUPPORTED OPERATING SYSTEMS..... 6
 - ADDITIONAL SERVICES..... 6
 - LANGUAGE SUPPORT.....7
- ENTERPRISE HIGH-AVAILABILITY..... 7**
 - PATRONI HIGH-AVAILABILITY..... 8
 - PATRONI HIGH-AVAILABILITY FOR CITUSDB.....9
 - PGBOUNCER CONNECTION POOLING.....10
 - VIP-MANAGER - VIRTUAL IP MANAGEMENT.....11
- POSTGRESQL CONNECTIVITY & DRIVERS..... 12**
 - SERVICES INCLUDED..... 12
 - SUPPORTED DRIVERS..... 12
 - CLIENT TOOLS & GUIS..... 13
- POSTGRESQL EXTENSIONS AND TOOLS..... 13**
 - SERVICES INCLUDED..... 13
 - SUPPORTED STANDARD EXTENSIONS..... 14
 - SUPPORTED POSTGRESQL TOOLS..... 14
 - SECURITY RELATED EXTENSIONS..... 15
 - SUPPORT HIGH-AVAILABILITY TOOLS..... 15
 - ARTIFICIAL INTELLIGENCE (AI) EXTENSIONS.....16
 - ORAFCE: ORACLE COMPATIBILITY FUNCTIONS..... 17
 - PG_SQUEEZE: DOWNTIME-FREE TABLE REORGANIZATION..... 19
 - PG_TIMETABLE: CUTTING EDGE SCHEDULING FOR POSTGRESQL..... 20
 - PGBACKREST: ENTERPRISE-GRADE POSTGRESQL BACKUPS.....21
 - PGROUTING: GIS ROUTING FOR POSTGRESQL.....22
 - PGTAP: UNIT TESTING FOR POSTGRESQL..... 23
 - PGWATCH: ENTERPRISE POSTGRESQL MONITORING.....24
 - POSTGIS: GIS SOLUTIONS FOR POSTGRESQL..... 25

PREFIX: PREFIX SEARCH FOR POSTGRESQL.....	26
WALBOUNCER: WAL FILTERING ON STEROIDS.....	27
PGAUDIT: AUDITING FOR POSTGRESQL.....	28
PG_SYSLOG: EXTENDED ENTERPRISE AUDITING FOR POSTGRESQL.....	29
PG_PERMISSIONS: POSTGRESQL PERMISSION AUDITING.....	30
POSTGRESQL TRANSPARENT DATA ENCRYPTION.....	30
PGVECTOR ARTIFICIAL INTELLIGENCE INTEGRATION.....	32
SUPPORT TOOLCHAIN.....	33
COMPONENTS & TECHNOLOGIES.....	33
CYBERTEC SUPPORT TOOLING: ADVANTAGES.....	34
GENERAL INFORMATION.....	35
REMOTE LOGINS HANDLING.....	35
REMOTE CONNECTIONS.....	35
SCREEN SHARING TOOLS.....	35
CUSTOM LOGINS.....	36
ADDITIONAL EXTENSIONS, PRODUCTS & SERVICES.....	36
BUG FIXES & SERVICE DELIVERY.....	36
WHY CYBERTEC SUPPORT.....	37
VERSION HISTORY.....	39

SUPPORT PACKAGES

CYBERTEC offers flexible **PostgreSQL / PGEE support packages** to customers, including multiple services and guarantees. All important details will be outlined and discussed in great detail.

ADVANCED SUPPORT SERVICES

We offer three types of services which customers can choose from:



Standard

The light option providing basic security



Professional

The professional solution for medium sized customers



Enterprise

The enterprise grade high-scalability solution

Our services are structured in an easy to understand, yet flexible way:

Services	Standard	Professional	Enterprise
Bug Fixes for PostgreSQL	✓	✓	✓
Supported PostgreSQL versions	7 years	7 years	Unlimited (No outphasing)
Ticket System	-	✓	✓
Number of Tickets	Limited	Limited	Unlimited
Support for emergency restore	-	✓	✓
PostgreSQL in Docker	✓	✓	✓
Remote login	-	-	✓
Slow query tuning	-	-	✓ *
Default response time	1h	45min	30min
Support times	8x5	8x5	24x7

* For business critical slow queries causing problems

SUPPORT RESPONSE TIMES

We offer the following response times to our customers:

Response Times	Standard	Professional	Enterprise
P1 - Critical	60min	45min	30min
P2 - High	5h	4h	2h
P3 - Medium	2 business days	2 business days	2 business days
P4 - Low	3 business days	3 business days	3 business days

Urgency and criticality are defined as shown in the following matrix:

		IMPACT			
		Extensive e.g. enterprise, region	Significant e.g. Business Unit, Location	Moderate e.g. a few users	Minor e.g. a single user
URGENCY	Critical e.g. can no longer work	P1 - Critical	P1 - Critical	P2 - High	P2 - High
	High e.g. can no longer perform primary work functions	P1 - Critical	P2 - High	P2 - High	P3 - Medium
	Medium e.g. can no longer do some work functions	P2 - High	P3 - Medium	P3 - Medium	P3 - Medium
	Low e.g. inconveniences	P4 - Low	P4 - Low	P4 - Low	P4 - Low

NOTE: "Time to resolution" is available on request (contact sales@cybertec-postgresql.com).

SUPPORTED OPERATING SYSTEMS

The following systems are supported:

Operating Systems	Standard	Professional	Enterprise
Linux			
RedHat Linux	✓	✓	✓
SUSE Enterprise Linux (SLES)	✓	✓	✓
Rocky Linux	✓	✓	✓
Arch Linux	✓	✓	✓
Ubuntu	✓	✓	✓
Debian	✓	✓	✓
Alma Linux	✓	✓	✓
Microsoft Windows	✓	✓	✓
FreeBSD	-	✓	✓

We support a variety of CPU architectures:

ARM

IBM POWER

X86 (32 bit & 64 bit)

More operating system and CPU combinations are supported on request. Please reach out to sales@cybertec-postgresql.com for details.

ADDITIONAL SERVICES

CYBERTEC does not only offer superior **PostgreSQL support services**, but will also assist with training packs, dedicated consultants, as well as consulting pools.

Packages are available for each support model. [Please reach out to our team to find out more.](#)

LANGUAGE SUPPORT

CYBERTEC is serving an ever-growing worldwide audience. Therefore we constantly expand on our ability to customize our experience to international needs.

Our support services are available in the following languages:

Language	Standard	Professional	Enterprise
English	8x5	8x5	24x7
German	8x5	8x5	24x7
Spanish	8x5 (*1)	8x5 (*1)	8x5 (*1)

(*1): For consulting and support desk (no 24x7 hotline).

Timezone in use: Argentina Standard Time (Buenos Aires, GMT-3)

Additional language packages are available on request (contact sales@cybertec-postgresql.com).

ENTERPRISE HIGH-AVAILABILITY

PostgreSQL as well as PGEE (PostgreSQL Enterprise Edition) can be made to operate 24x7. CYBERTEC offers a comprehensive set of services, including:

HIGH-AVAILABILITY POSTGRESQL CLUSTERS	MULTI-DATA CENTER POSTGRESQL	HIGH-SCALABILITY POSTGRESQL
--	---	--

We ensure reliable services in a professional environment.

PATRONI HIGH-AVAILABILITY

Description:

Patroni is a **High-Availability solution** for PostgreSQL, which allows for automatic failover and recovery. It is connected to a DCS (“Distributed Consensus System”) and allows for superior uptime across entire database infrastructures.



It can be integrated with solutions such as Kubernetes (including the CYBERTEC Kubernetes Operator), OpenShift, and SUSE Rancher.

We support Patroni in a non-Citus environment by default. Support for the CitusDB-based solution is described separately.

Services:

The following services will be included:

Services	Standard	Professional	Enterprise
Bug Fixes for extensions	✓	✓	✓
Ticket System	-	✓	✓
Supported PostgreSQL Versions	10 or higher	10 or higher	10 or higher

By default, Patroni on Windows is not supported. Contact sales@cybertec-postgresql.com for Windows support.

PATRONI HIGH-AVAILABILITY FOR CITUSDB

Description:

Patroni is a High-Availability solution for PostgreSQL that allows for automatic failover and recovery. It is connected to a DCS (“Distributed Consensus System”) and allows for superior uptime across entire database infrastructures. It offers support for scalable CitusDB solutions, which allow customers to operate a shared environment 24x7 with minimal downtime.



Patroni with CitusDB can be integrated with solutions such as Kubernetes (including the CYBERTEC Kubernetes Operator), OpenShift, and SUSE Rancher.

Services:

The following services will be included:

Services	Standard	Professional	Enterprise
Bug Fixes for extensions	✓	✓	✓
Ticket System	-	✓	✓
Supported PostgreSQL versions	13 or higher	13 or higher	13 or higher

Patroni with CitusDB is not supported on Microsoft Windows.

PGBOUNCER CONNECTION POOLING

Description:

PgBouncer is a **lightweight connection pooler** for PostgreSQL that is capable of pooling connections to one or more database systems. It serves clients over UNIX domain sockets and TCP connections. PgBouncer maintains a pool of connections for each unique user and database pair, and helps to reduce the overhead of connection creation.

Services:

The following services will be included:

Services	Standard	Professional	Enterprise
Bug Fixes for pgbouncer	✓	✓	✓
Ticket System	-	✓	✓
Supported pgbouncer versions	1.16 or higher	1.16 or higher	1.16 or higher

PgBouncer is not supported on Microsoft Windows (“best effort” only).

VIP-MANAGER - VIRTUAL IP MANAGEMENT

Description:

Patroni is the de-facto standard for PostgreSQL high-availability in the Open Source world. To make a Patroni cluster transparent to the application in an on-premise environment, it is possible to move a virtual IP address inside the cluster.

vip-manager does IP management for a Patroni cluster based in etcd or consul.

Services:

The following services will be included:

Services	Standard	Professional	Enterprise
Bug Fixes for vip-manager	✓	✓	✓
Ticket System	-	✓	✓
Supported vip-manager versions	2.0 or higher	2.0 or higher	2.0 or higher

POSTGRESQL CONNECTIVITY & DRIVERS

We support a rich set of connectors and drivers.

SERVICES INCLUDED

Our support services include the following sets of services:

Services	Standard	Professional	Enterprise
Bug Fixes for driver	✓	✓	✓
Ticket System	-	✓	✓
Supported driver versions	7 years	7 years	7 years

SUPPORTED DRIVERS

The following client interfaces are officially supported:

Driver/Connection	Standard	Professional	Enterprise
libpq (C, C++)	✓	✓	✓
PostgreSQL JDBC driver	✓	✓	✓
Python psycopg2/3	✓ *	✓ *	✓ *
Perl DBI	✓ *	✓ *	✓ *
unixODBC for PostgreSQL	-	✓ *	✓ *
Go (pgx, pgxmock, lib/pq)	-	✓ *	✓ *
JavaScript (pg, libpq)	-	✓	✓

(*2): Support is not available for Microsoft Windows.

CLIENT TOOLS & GUIs

User interfaces are an important aspect of our daily work. Therefore we help customers in this area as well.

GUI interfaces	Standard	Professional	Enterprise
pgadmin4	✓	✓	✓

We provide the following services for your tool chain:

Services	Standard	Professional	Enterprise
Bug Fixes for the tool	✓	✓	✓
Ticket System	-	✓	✓
Supported tooling versions	5 years	5 years	5 years

POSTGRESQL EXTENSIONS AND TOOLS

CYBERTEC offers support for an ever-growing number of **extensions as well as tools** to enable our customers to make full use of the PostgreSQL ecosystem.

SERVICES INCLUDED

Our support services include the following sets of services:

Services	Standard	Professional	Enterprise
Bug Fixes for vip-manager	✓	✓	✓
Ticket System	-	✓	✓
Supported PostgreSQL versions	7 years *	7 years *	unlimited *

* Assuming the extensions support the desired version of PostgreSQL

SUPPORTED STANDARD EXTENSIONS

Making full use of the PostgreSQL ecosystem is important and therefore the following standard PostgreSQL extensions are fully supported:

Standard PG Extensions	Standard	Professional	Enterprise
contrib modules	✓	✓	✓
oracle_fdw	✓	✓	✓
prefix	✓	✓	✓
pg_qualstats	-	✓	✓
pgrouting	-	✓	✓
pgTAP	-	✓	✓
PostGIS	-	✓	✓
orafce	-	✓	✓

SUPPORTED POSTGRESQL TOOLS

CYBERTEC offers support for additional tools that are widely adopted by the PostgreSQL and PGEE user base. The following tools are available:

Standard PG Extensions	Standard	Professional	Enterprise
pg_squeeze	✓	✓	✓
pg_timetable	✓	✓	✓
pgbackrest	✓	✓	✓
pgwatch	✓	✓	✓

SECURITY RELATED EXTENSIONS

Improving security is at the core of professional PostgreSQL support. Therefore, we provide full support for the following modules:

Modules	Standard	Professional	Enterprise
pgaudit	-	✓	✓
pg_syslog	-	-	✓ *
pg_permissions	✓	✓	✓
Transparent Data Encryption (TDE)	-	-	✓ *

* Through PGEE (CYBERTEC PostgreSQL Enterprise Edition)

SUPPORT HIGH-AVAILABILITY TOOLS

Standard PG Extensions	Standard	Professional	Enterprise
vip-manager	✓ *	✓ *	✓ *
Patroni HA	✓ *	✓ *	✓ *
Patroni HA for CitusDB	-	✓ *	✓ *
pgbouncer	-	✓ *	✓ *

* Only for Linux:

Support for other UNIX based systems is provided on request.

Support for Windows on request.

ARTIFICIAL INTELLIGENCE (AI) EXTENSIONS

Artificial intelligence will play a key role in the future of technology, and therefore, CYBERTEC helps you leverage the power of AI by supporting AI-related modules that open the door to the future.

Modules	Standard	Professional	Enterprise
pgvector	-	-	✓

Please reach out to our team in case you are looking for additional AI extensions, or in case you want to integrate modern machine learning technologies into your infrastructure (sales@cybertec-postgresql.com).

ORACLE_FDW: CONNECTING TO ORACLE

Description:

Integrating Oracle with PostgreSQL to exchange data is vital for running business applications. The oracle_fdw extension is a way to expose data in Oracle as tables in PostgreSQL.

Services:

The following services will be included:

Services	Standard	Professional	Enterprise
Bug Fixes for extensions	✓	✓	✓
Ticket System	-	✓	✓
Supported PostgreSQL versions	7 years *	7 years *	unlimited *

* Assuming the extensions support the desired version of PostgreSQL

ORAFCE: ORACLE COMPATIBILITY FUNCTIONS

Description:

The orafce extension adds compatibility functions to mimic Oracle functionality in PostgreSQL. This is especially useful if you are moving from Oracle, as the extension can dramatically reduce the effort needed to migrate from Oracle to PostgreSQL.

Services:

The following services will be included:

Services	Standard	Professional	Enterprise
Bug Fixes for extensions	✓	✓	✓
Ticket System	-	✓	✓
Supported PostgreSQL versions	7 years *	7 years *	unlimited *

* Assuming the extensions support the desired version of PostgreSQL

PG_QUALSTATS: IN-DEPTH PERFORMANCE DEBUGGING

Description:

Performance matters, and debugging the server to achieve maximum performance is key to success. pg_qualstats allows you to debug performance down to the “per operator level” and gives deep insights into bottlenecks.

Services:

The following services will be included:

Services	Standard	Professional	Enterprise
Bug Fixes for extensions	✓	✓	✓
Ticket System	-	✓	✓
Supported PostgreSQL versions	7 years *	7 years *	unlimited *

* Assuming the extensions support the desired version of PostgreSQL

PG_SQUEEZE: DOWNTIME-FREE TABLE REORGANIZATION

Description:

pg_squeeze is a tool developed by CYBERTEC which allows you to reorganize a table with the lowest possible lock level. It makes it possible to shrink tables without causing downtime, and therefore allows to solve the problem of table bloat in an intelligent and efficient way.



Services:

The following services will be included:

Services	Standard	Professional	Enterprise
Bug Fixes for extensions	✓	✓	✓
Ticket System	-	✓	✓
Supported PostgreSQL versions	7 years *	7 years *	unlimited *

* Assuming the extensions support the desired version of PostgreSQL

PG_TIMETABLE: CUTTING EDGE SCHEDULING FOR POSTGRESQL

Description:

pg_timetable is a feature-rich, database-driven job scheduler for PostgreSQL developed by CYBERTEC, which is able to run a variety of workloads. It is able to run SQL scripts, command line executables, as well as builtin tasks such as sending emails, and more.



Services:

The following services will be included:

Services	Standard	Professional	Enterprise
Bug Fixes for extensions	✓	✓	✓
Ticket System	-	✓	✓
Supported PostgreSQL versions	7 years *	7 years *	unlimited *

* Assuming the extensions support the desired version of PostgreSQL

PGBACKREST: ENTERPRISE-GRADE POSTGRESQL BACKUPS

Description:

Making sure that data is safe and secure is key to success, and pgbackrest is the de-facto standard to handle PostgreSQL backups. We support pgbackrest for standard PostgreSQL as well as for PGEE (CYBERTEC PostgreSQL Enterprise Edition), which features on-disk encryption and thus requires special precautions on the backup side.

Services:

The following services will be included:

Services	Standard	Professional	Enterprise
Bug Fixes for extensions	✓	✓	✓
Ticket System	-	✓	✓
Supported PostgreSQL versions	10 or higher	10 or higher	10 or higher

* Assuming the extensions support the desired version of PostgreSQL

PGROUTING: GIS ROUTING FOR POSTGRESQL

Description:

pgRouting is a solution that allows end users to perform routing calculation directly in the database, as well as leverage the power of PostGIS to build powerful solutions for spatial data.

Services:

The following services will be included:

Services	Standard	Professional	Enterprise
Bug Fixes for extensions	✓	✓	✓
Ticket System	-	✓	✓
Supported PostgreSQL versions	7 years *	7 years *	unlimited *

* Assuming the extensions support the desired version of PostgreSQL

PGTAP: UNIT TESTING FOR POSTGRESQL

Description:

Managing and improving the quality of software can be done using unit tests. pgTAP is an extension providing all the infrastructure needed to implement unit tests for PostgreSQL functions, stored procedures, and alike.

Services:

The following services will be included:

Services	Standard	Professional	Enterprise
Bug Fixes for extensions	✓	✓	✓
Ticket System	-	✓	✓
Supported PostgreSQL versions	7 years *	7 years *	unlimited *

* Assuming the extensions support the desired version of PostgreSQL

PGWATCH: ENTERPRISE POSTGRES SQL MONITORING

Description:

pgwatch is a web based application developed by CYBERTEC which collects metrics from your PostgreSQL infrastructure and displays this data in easy to use dashboards. Support is available for PostgreSQL 10 or higher as well as for PGEE (CYBERTEC PostgreSQL Enterprise Edition).



Services:

The following services will be included:

Services	Standard	Professional	Enterprise
Bug Fixes for extensions	✓	✓	✓
Ticket System	-	✓	✓
Supported PostgreSQL versions	10 or higher	10 or higher	10 or higher

* Assuming the extensions support the desired version of PostgreSQL

POSTGIS: GIS SOLUTIONS FOR POSTGRESQL

Description:

PostGIS is the de-facto standard in the Open Source GIS world. It adds additional data types as well as operators and functions to handle geometric data. PostGIS provides a security upgrade path and is the foundation for many other Open Source tools.

Services:

The following services will be included:

Services	Standard	Professional	Enterprise
Bug Fixes for extensions	✓	✓	✓
Ticket System	-	✓	✓
Supported PostgreSQL versions	7 years *	7 years *	unlimited *

* Assuming the extensions support the desired version of PostgreSQL

PREFIX: PREFIX SEARCH FOR POSTGRESQL

Description:

prefix implements longest prefix search for PostgreSQL. Prefix matching is both very common and important in telephony applications, where call routing and costs depend on matching caller/callee phone numbers to an operator prefix.

Services:

The following services will be included:

Services	Standard	Professional	Enterprise
Bug Fixes for extensions	✓	✓	✓
Ticket System	-	✓	✓
Supported PostgreSQL versions	7 years *	7 years *	unlimited *

* Assuming the extensions support the desired version of PostgreSQL

WALBOUNCER: WAL FILTERING ON STEROIDS

Description:

walbouncer is a tool developed by CYBERTEC (as Open Source) allowing you to filter the transaction log, which allows you to partially replicate databases. A typical use case is to replicate database “A” to one server and database “B” to some other machine by separating the WAL-stream into various pieces.



Services:

The following services will be included:

Services	Standard	Professional	Enterprise
Bug Fixes for extensions	✓	✓	✓ *
Ticket System	-	✓	✓
Supported PostgreSQL versions	7 years	7 years	unlimited *

* Only for Linux systems, no support for Microsoft Windows

PGAUDIT: AUDITING FOR POSTGRES SQL

Description:

Database auditing involves observing a database so as to be aware of the actions of database users. Database administrators and consultants often set up auditing for security purposes, for example, to ensure that those without the permission to access information do not access it.

Services:

The following services will be included:

Services	Standard	Professional	Enterprise
Bug Fixes for extensions	Yes	✓	✓
Ticket System	-	✓	✓
Supported PostgreSQL versions	7 years	7 years *	unlimited *

* Assuming the extensions support the desired version of PostgreSQL

PG_SYSLOG: EXTENDED ENTERPRISE AUDITING FOR POSTGRESQL

Description:

pg_syslog is an audit extension provided by PGEE (CYBERTEC PostgreSQL Enterprise Edition) that is able to write the audit trail using a separate UNIX user. This adds an additional layer of security by separating the audit log from the database.

Services:

The following services will be included:

Services	Standard	Professional	Enterprise
Bug Fixes for extensions	✓	✓	✓
Ticket System	-	✓	✓
Supported PostgreSQL versions	7 years	7 years	unlimited*

* Assuming the extensions support the desired version of PostgreSQL

PG_PERMISSIONS: POSTGRESQL PERMISSION AUDITING

Description:

pg_permissions is the easiest way to visualize and inspect database permissions to increase security and ensure compliance requirements are met. By making permissions more accessible, we can greatly increase visibility and allow for faster and more precise inspections.

Services:

The following services will be included:

Services	Standard	Professional	Enterprise
Bug Fixes for extensions	✓	✓	✓
Ticket System	-	✓	✓
Supported PostgreSQL versions	7 years	7 years	unlimited*

* Assuming the extensions support the desired version of PostgreSQL

POSTGRESQL TRANSPARENT DATA ENCRYPTION

Description:

Transparent Data Encryption (TDE) is a feature developed by CYBERTEC and provided by PGEE (CYBERTEC PostgreSQL Enterprise Edition) only. It transparently encrypts data on disk and therefore offers users the ability to protect PostgreSQL data files in the filesystem.



Encryption happens during I/O on the buffer level using a variety of encryption methods.

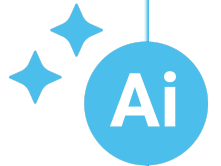
Services:

The following services will be included:

Services	Standard	Professional	Enterprise
Bug Fixes for extensions	✓	✓	✓
Ticket System	-	✓	✓
Assisted data rescue	-	✓	✓
Supported PGEE versions	-	7 years	unlimited *

* Assuming the extensions support the desired version of PostgreSQL

PGVECTOR ARTIFICIAL INTELLIGENCE INTEGRATION



Description:

pgvector is an extension that is often used in combination with Artificial Intelligence and modern language models (LLMs) such as LLAMA, Deepseek or ChatGPT. It is the glue between PostgreSQL and modern AI technology.

Services:

The following services will be included:

Services	Standard	Professional	Enterprise
Bug Fixes for pgvector	-	-	✓
Ticket System	-	✓	✓
Supported pgvector versions	0.8.0 or higher	0.8.0 or higher	0.8.0 or higher

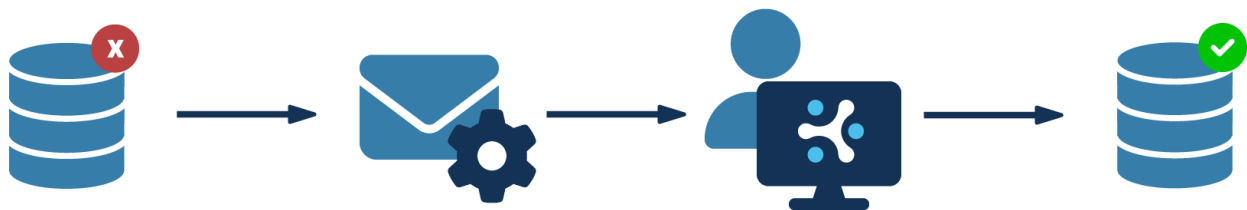
pgvector is not supported on Microsoft Windows (“best effort” only).

SUPPORT TOOLCHAIN

Handling support efficiently is at the core of our agenda. Therefore, we offer a comprehensive support toolchain that reduces downtime and enables smooth 24x7 operations.

“Prevention is better than fixing”

Our toolchain is optimized to reduce the number of tickets by enabling proactive rather than reactive support. It automatically tracks your infrastructure to predict failure and to detect problems long before downtime occurs.



COMPONENTS & TECHNOLOGIES

Our technology consists of various components which work together in harmony to prevent problems from happening in the first place.

Simply run a ready-to-use support container in your infrastructure and our tooling will help reduce the number of tickets to close-to-zero.

We use a variety of technologies:

- **pgwatch:** Enterprise monitoring and metric collection
- **pg_deep_thinker:** We generate professional advice and compile recommendations to make your database works more efficiently.
- **pg_permissions:** Automatic permission monitoring and divergence detection

CYBERTEC SUPPORT TOOLING: ADVANTAGES

Many hyperscalers earn by “inefficiency”. What does that mean? The more inefficient your database is, the more hardware you will buy in the cloud, making hyperscalers earn.

“Winning by efficiency not inefficiency”

We at CYBERTEC offer a different approach: Our consultant-supervised recommendation engine tells you what you really need to know: Change column order, create or drop indexes, change runtime parameters or rewrite a query. Our engine will give real, professional advice which is then cross-checked by real humans to achieve maximum efficiency.

Our engine will easily pay for itself by considerably reducing hardware consumption and ensuring smooth operations 24x7, while reducing the number of critical tickets to the absolute minimum.

GENERAL INFORMATION

The following section contains general information relevant to our support operations.

REMOTE LOGINS HANDLING

In case your support agreement allows us to log into your system or share live information with our support team, we provide access using the following technologies stated below. Other technologies are available on request and will be part of the support agreement.

REMOTE CONNECTIONS

The following technologies are available:

Services	Standard	Professional	Enterprise
Telnet ¹	-	✓ ²	✓
Direct SSH	-	✓ ²	✓
Hardware routers provided by the client (for SSH access)	-	-	✓ ³
Remote Desktop (RDP, to reach a PostgreSQL command line)	-	-	✓ ⁴

¹ Not recommended anymore because of security

² 24/7 Professional Support (Remote) is provided

³ Happens in coordination with the customer as an add-on.

⁴ Direct access is required. In case tunnels, etc. are required a special add-on agreement is needed.

SCREEN SHARING TOOLS

In case direct SSH logins are not available, the following screen sharing tooling can be used:



CUSTOM LOGINS

Other methods to log in (VPN, etc.) are available on request and can be procured using add-ons to your support agreement. Please reach out to sales@cybertec-postgresql.com for more information.

ADDITIONAL EXTENSIONS, PRODUCTS & SERVICES

Support for additional extensions, PostgreSQL tools and services are available on request. Please reach out to sales@cybertec-postgresql.com.

BUG FIXES & SERVICE DELIVERY

As mentioned above, CYBERTEC will in many cases guarantee to fix bugs in PostgreSQL and in PostgreSQL related tools, such as drivers. In case bug fixing is included in your package, those bugs will be fixed within reasonable time, which can vary depending on the type of problem found.

Additional preconditions are:

- Debugging packages must be installed on the system (= debugging symbols must be present in the binaries)
- In case bugs are investigated on the customer's system, access to debugging infrastructure must be available (gdb, etc.).
- In case bugs are not investigated on the system, the customer will provide a "core" file, which allows for post-mortem inspection.
- The customer must provide a reproducible test case that clearly demonstrates the bug and allows a reproduction on the client system or on a CYBERTEC system with similar features.

Note that in many cases problems have been caused by bugs inside the compiler provided by the operating system. In this case, we do not guarantee that a bug fix can be provided.

The same is true for broken operating system libraries. In this case, fixing bugs is also to be seen as a "best effort" agreement.

In case of bug fixes, new packages will be issued.

WHY CYBERTEC SUPPORT

Welcome to the world of CYBERTEC, a leading provider of **professional services for PostgreSQL**. CYBERTEC has been helping companies like yours worldwide, since the year 2000, to make your database management as easy, uncomplicated, cost-effective, and innovative as possible.

As a user of PostgreSQL, you might already appreciate its flexibility, power, and open-source nature, but managing a robust and reliable PostgreSQL environment can become complex as your business grows.

“PostgreSQL support made easy”

That’s where CYBERTEC steps in to **simplify the complexity**. Our expertly curated support services are designed to help you maintain optimal performance, ensure data security and compliance with regulatory standards, and scale your infrastructure effortlessly. By partnering with us, you gain access to cutting-edge monitoring tools, automated solutions, and **hands-on expertise** that empower you to focus on what truly matters—your business. With CYBERTEC by your side, managing PostgreSQL becomes a breeze, allowing you to stay ahead in today’s fast-paced digital landscape.

Our international team of experts are available to quickly and reliably help you handle a full range of technical issues **24/7**, while assisting you in generating **sustainable added value** from your data.

AUSTRIA (HQ)

CYBERTEC POSTGRESQL
INTERNATIONAL (HQ)

SWITZERLAND

CYBERTEC POSTGRESQL
SWITZERLAND

URUGUAY

CYBERTEC POSTGRESQL
SOUTH AMERICA

ESTONIA

CYBERTEC POSTGRESQL
NORDIC

POLAND

CYBERTEC POSTGRESQL
POLAND

SOUTH AFRICA

CYBERTEC POSTGRESQL
SOUTH AFRICA

CYBERTEC PostgreSQL International (HQ)

Römerstraße 19
2752 Wöllersdorf
Austria
Phone: +43 (0)2622 93022-0
E-Mail: office@cybertec.at

CYBERTEC PostgreSQL Nordic

Fahle Office
Tartu mnt 84a-M302
10112 Tallinn
Estonia
Phone: +372 712 3013
E-Mail: nordic@cybertec-postgresql.com

CYBERTEC PG Database Services South America S.A.

Misiones 1486, Piso 3
11000 Montevideo
Uruguay
E-Mail: latam@cybertec-postgresql.com

CYBERTEC PostgreSQL Switzerland

Bahnhofstraße 10
8001 Zürich
Switzerland
Phone: +41 43 456 2684
E-Mail: swiss@cybertec-postgresql.com

CYBERTEC PostgreSQL Poland

Pl. Inwalidów 10
01-552 Warsaw
Poland
E-Mail: poland@cybertec-postgresql.com

CYBERTEC PostgreSQL South Africa


No. 26, Cambridge Office Park
5 Bauhinia Street, Highveld Techno
Park
0046 Centurion
South Africa
Phone: +27(0)012 881 1911
E-Mail: africa@cybertec-postgresql.com



If you need further information

For more information, or if you have any questions about our range of products, tools and services, contact us. There's no obligation—send us an inquiry via email or give us a call.



Contact

 **CYBERTEC PostgreSQL International GmbH**
Römerstraße 19
2752 Wöllersdorf
AUSTRIA

 + 43 (0) 2622 93022-0
 sales@cybertec-postgresql.com

VERSION HISTORY

Version	Effective Date	Description	Author	Reviewed By	Approved By
1.2	2025-03-04	Adjustments for new market developments	Hans-Jürgen Schöning	Raj Verma	Cornelia Biacsics
1.2	2025-03-19	Design Review & Content Check	Scarlett Riggs	Andrea Schantl-Weiß	Sarah Gruber